

S.E. 1/4 OF  
SECTION 11, T.5 N., R.2 W., S.L.B.&M.  
IN ROY CITY

73

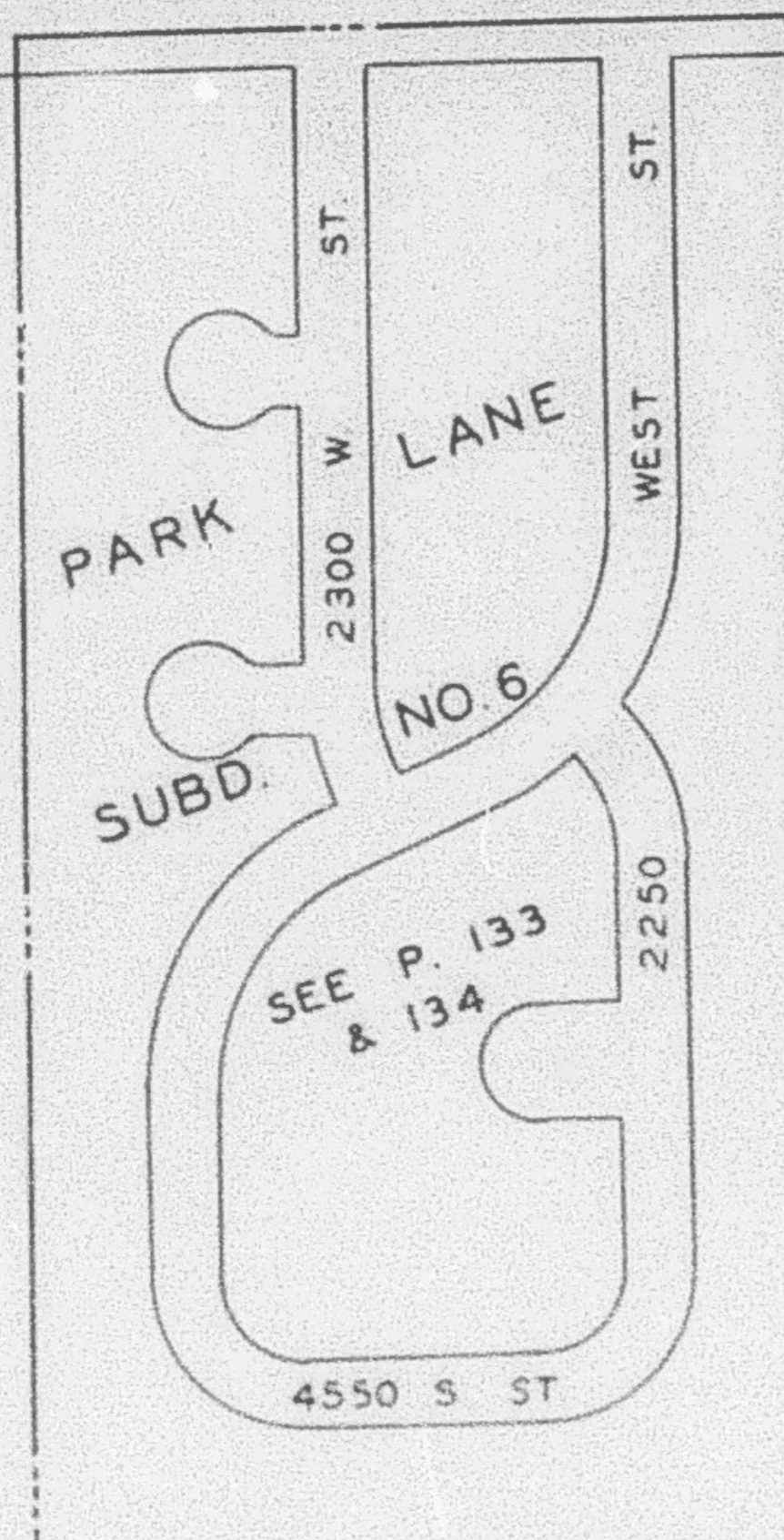
TAXING UNIT: 41

SCALE: 1" = 200'

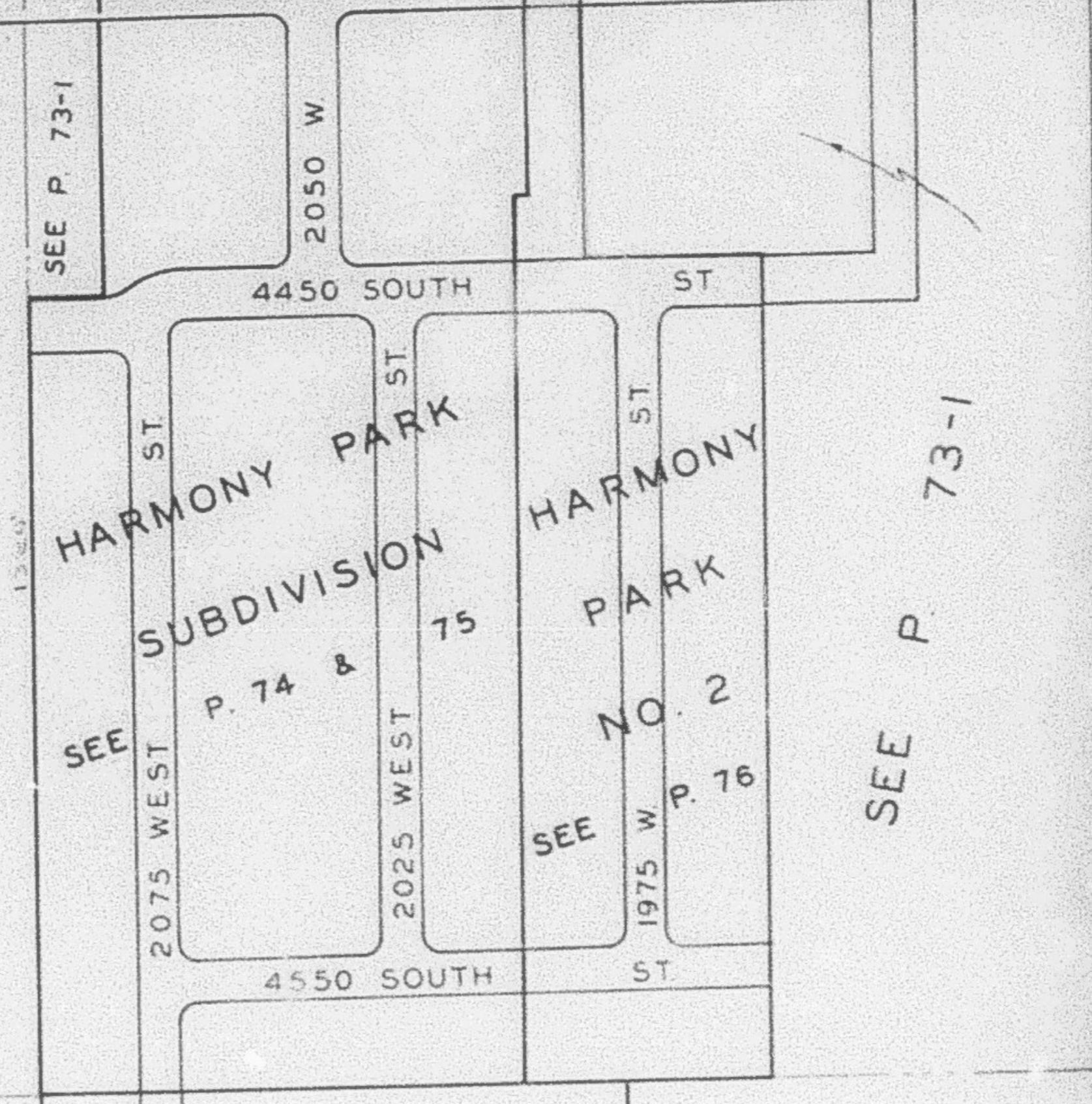
PREFIX: 08-073  
ALSO SEE P. 73-1

SEE P. 62

4400 SOUTH STREET



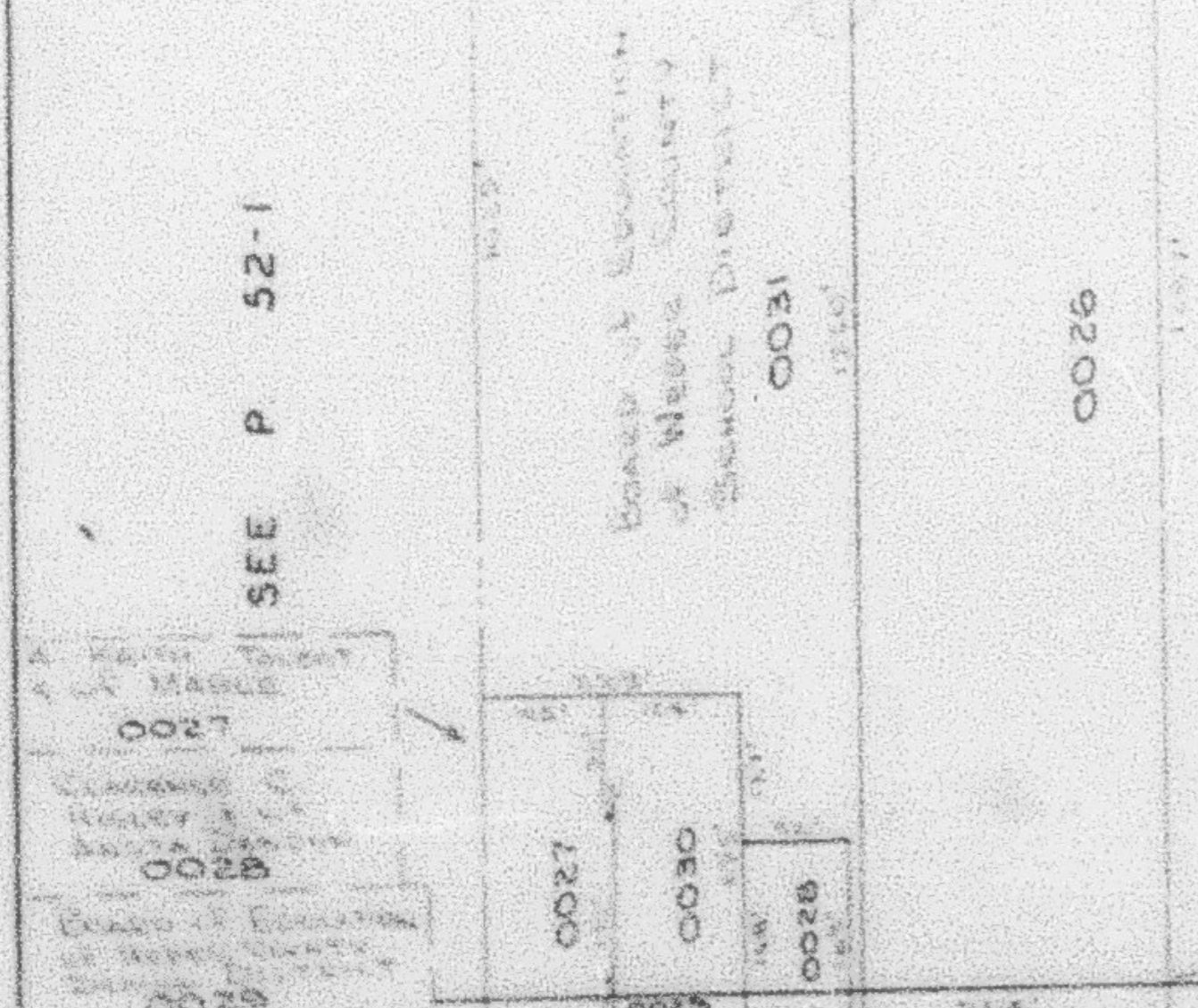
BOARD OF EDUCATION  
OF WEDER COUNTY  
SCHOOL DISTRICT  
0033  
SAND RIDGE JR  
HIGH SCHOOL



NOTE: 15 1/2'  
WEST OF SEC LINE  
AT 1/4 COR.  
PARCEL Nos  
0025 TO 0033

HILLS OF HOMES  
SEE P. 78

WEDER COUNTY  
SCHOOL DISTRICT  
0025  
ROY HIGH SCHOOL



SEE P. 52-1

SEE BOOK 9, P. 15

SEE BOOK 9, P. 1-1

1900 WEST STATE HIGHWAY B4

SEE P. 87-1